

Statutory Document No. 2022/0259



*Highways Act 1986*

# HIGHWAYS (OLD RAILWAY LINE, RAMSEY) (DEFINITIVE MAP AND ASSOCIATED STATEMENT) ORDER 2022<sup>1</sup>

*Laid before Tynwald: 15 November 2022*

*Coming into operation: in accordance with article 2.*

The Department of Infrastructure makes the following Order under section 92A(2) of the Highways Act 1986.

## **1 Title**

This Order is the Highways (Old Railway Line, Ramsey) (Definitive Map and Associated Statement) Order 2022.

## **2 Commencement**

This Order comes into operation on the day after it is made<sup>1</sup>.

## **3 Interpretation**

In this Order, the “**new highway**” means the cycle-path —

- (a) running the course of the dismantled railway line from its junction with Gardeners Lane to the back of the footway on Poyll Dooey Road at a width of 3 metres; and
- (b) including the spur from the dismantled railway line to the back of the carriageway of Gladstone Way at a width of 3 metres, and

which is shown by solid purple line on the map in the Schedule.

---

<sup>1</sup> Under section 92A(7) of the Highways Act 1986, an order made under section 92A(2) which does no more than give effect to an order under section 91 of that Act must be laid before Tynwald as soon as practicable after it is made. This Order gives effect to the Old Railway Line, Ramsey (Public Path) Order 2020 (SD 2020/0384), which was made under section 91 of the Highways Act 1986.

**4 Amendment to the definitive map and associated statement**

- (1) The definitive map is amended by indicating on the definitive map using a solid green line that the new highway has been created and marked “681”.
- (2) The associated statement in respect of the highway is amended as follows.
- (3) After the entry numbered 680, insert —

<p>681. SC49SW</p>	<p>The Old Railway Line Cycle-path starts at an entrance from Gardeners Lane, SC 437946, and runs east to Poyll Dooey Road, SC445946. At SC441946 a short spur takes the Cycle-path onto Gladstone Way at SC441945.</p> <p>The Public Right of Way is designated as a cycle-path with a width of 3 metres, over which the public have a right of way on pedal cycles and a right of way on foot.</p>	<p>772 metres from Gardeners Lane to Poyll Dooey Road.</p> <p>83m from the Cycle-path (running from Gardeners Lane to Poyll Dooey Road) to Gladstone Way</p>
--------------------	--	--

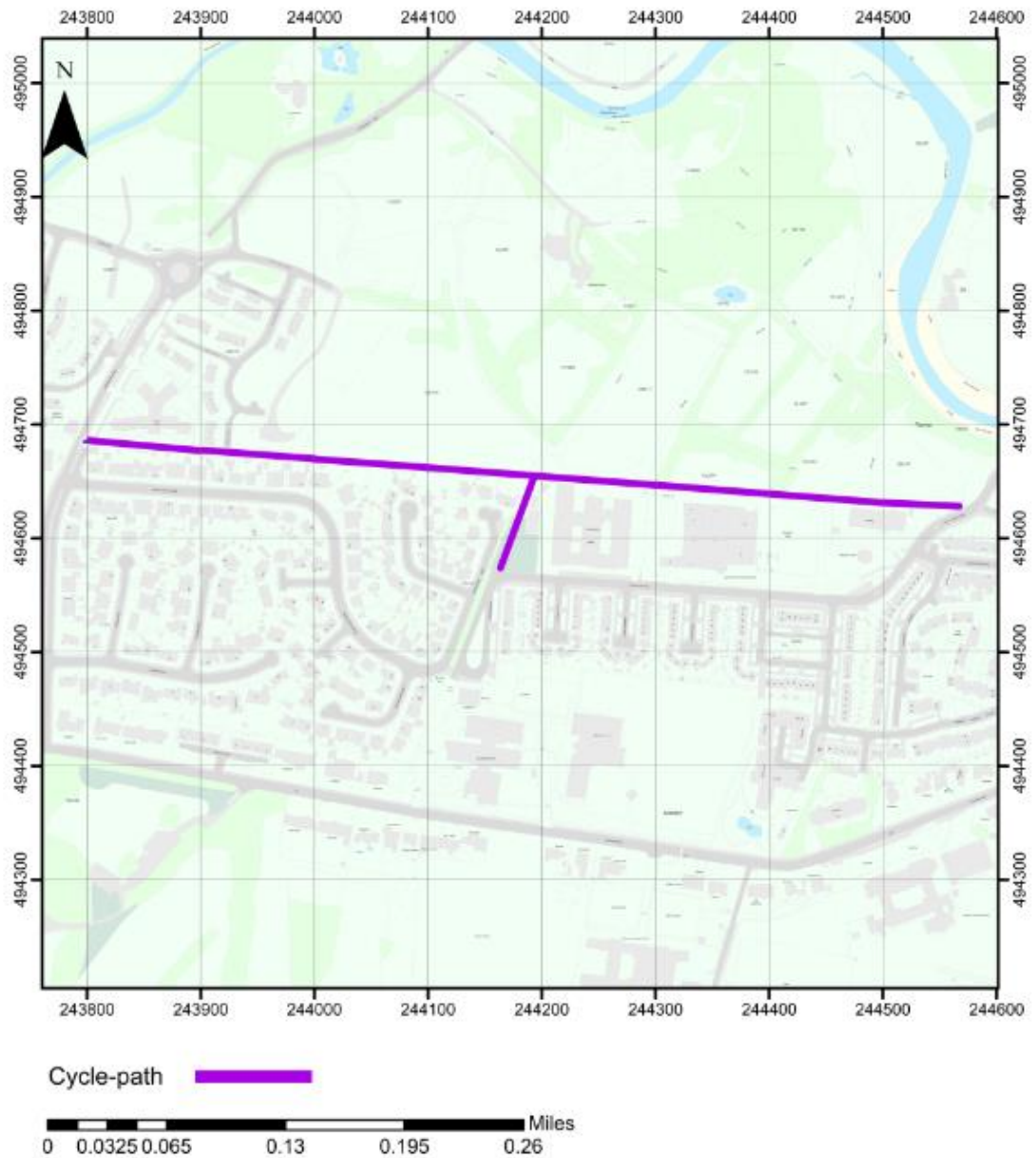
**MADE 12 OCTOBER 2022**



SCHEDULE

[Article 3]

MAP



## ENDNOTES

### Table of Endnote References

---

<sup>1</sup> The format of this legislation has been changed as provided for under section 75 of, and paragraph 2 of Schedule 1 to, the Legislation Act 2015. The changes have been approved by the Attorney General after consultation with the Clerk of Tynwald as required by section 76 of the Legislation Act 2015.